

**A PRELIMINARY INVESTIGATION ON CHANGING TEMPERATURE
MAXIMA-MINIMA DEVIATION ($T_{\text{MIN-MAX}}$ DEVIATION)
IN INDONESIA**

Djoko Harmantyo

djokoharmantyo@yahoo.com

*Departement of Geography Faculty of Matematic and Natural Science
University of Indonesia*

ABSTRACT

While the immediate impacts of climate change have been widely discussed, there are only few researches on climate change revealing its effect to temperature amplitude. Changing temperature amplitude will hamper metabolism process, which in turn will decrease productivity and, even, cause the extinction of certain organism species. This research will expose the changing temperature amplitude ($T_{\text{min-max}}$) including its trend pattern in Indonesia. The adoption of trend analysis method and comparison analysis to the values of temperature amplitude in 60 AWS station from 1980-2007 indicates upward trend of annual mean temperature with shorter temperature amplitude. This shorter temperature amplitude is characterized by annual mean temperature maxima increase less than the rise of annual mean temperature minima. Data analysis finds indication, i.e. the more eastward direction, the greater difference of average $T_{\text{min-max}}$ deviation. Yet, this research fails to show what factors contributing to the changing temperature amplitude. More in-depth research of these factors at ecological scale will be necessary as crucial part in determining adaptation programs to this on-going climate change phenomenon.

Key words: climate change, temperature amplitude, $T_{\text{min-max}}$

INTRODUCTION

The most glaring environmental issue in early 21st century undoubtedly concerns about the warming surface temperature of Earth resulting in climate change. According to IPCC (2007) the average surface temperature of earth was warmer by 0.74 °C from 1906-2005. By end of 21st century, this temperature will constantly rise at 1.1 – 6.4 °C. As for Indonesia, for the last 100 years, the surface temperature has been increasing at 0.10 – 0.20 °C range.

The rise of atmospheric temperature on Earth has changed climate process including more intensive evaporation process generating more vapors forming clouds and rain. This causes extreme rainfalls consisting of downpours in relatively longer period. This phenomenon is potential for floods, landslides that may claim enormous material loss and fatalities.

Warmer temperature also affects atmospheric pressure and air (wind) mass movement potential to incite storms and typhoons. These natural phenomena may devastate settlement infrastructure and facilities and claim lives. Recently, flood, landslide, storm and typhoon have been routine catastrophes in many regions around the world including Indonesia despite variation of frequency and severity.

Long draught compounded with extreme temperature will incite grave forest fires since more CO₂ gas is concentrated in air. The fire indeed causes a lot of material and immaterial loss.

The obvious impact of temperature rise packed into global climate change issue becomes the focus of all countries worldwide. It is worried that this impact will disrupt the life on earth. Numerous initiatives have been taken to cope with the impacts of climate change including maximizing the consumption of non-fossil energy as alternatives such as bio-fuel, wind and tidal powered energy, geothermal and nuclear energy. In addition, REDD ++ (Reduction Emission for Deforestation and Degradation) program has been introduced particularly in the countries with vast forest areas.

This program is focused on efforts to reduce CO₂ emission as the source of pollutant and to lesser CO₂ concentration in atmosphere by way of intensifying photosynthesis process. Apart from such mitigation program, adaptation program to the various impacts of climate change is also carried out through technology transfer program and institutional capacity building program. In many global agreements, adaptation program is specifically directed to the most suffered communities of climate change. They include farmers, fishing farmers and other poor people.

Based on the assumption that the widespread meteorologist disasters in Indonesia are more attributed to the constantly warming temperature, it raises a question. How is the characteristic of this warming temperature reviewed from the changing maximum and minimum temperature amplitude range? This aspect is interesting to investigate since any change of temperature amplitude range will affect metabolism process and disturb organism growth and development. In relatively long term, it will decrease productivity. Unless this condition is appropriately dealt with, the living balance on earth will be disrupted and very likely that the entire life in this planet will go to extinction.

In its preliminary stage, this research aims to identify the trend pattern of average temperature and temperature amplitude changes ($T_{\min-\max}$) in Indonesia. The finding of this study can be used as information in investigating the adaptation capacity of living creatures such as plants, animals and human beings as the result of temperature rise and temperature amplitude range change ($T_{\min-\max}$ range) as tolerable limit for the survival of organism.

THE METHODS

For this study, regional approach coupled with spatial analysis method (geographic analysis) and statistic analysis support have been adopted.

Temperature data of this study is based on direct measurement using Automatic Weather Station (AWS) performed by Meteorology Climatology and Geophysics Agency (BMKG) in 60 basic stations from 1980 to 2007. The base data is that of daily minimum and maximum temperatures.

Base data is processed to get average maximum temperature (average T_{\max}) and average minimum temperature (average T_{\min}). As to $T_{\min-\max}$ range, it is derived from the difference of average T_{\min} and average T_{\max} . The monthly range value of $T_{\min-\max}$ is used to compute the average monthly range value of $T_{\min-\max}$ for 28 years (1980-2007). Data of average T_{\min} , average T_{\max} and average range $T_{\min-\max}$ for 28 years is then processed into graphs. The trend is tested to measure its significance based on a time series data.

The adopted testing statistic is Pearson's correlation coefficient in view of slope and significance level.

Temperature data is processed using formula:

$$X_r = \frac{\sum X_i}{n}$$

Where:

- x_r = arithmetic mean of data
- n = number of data
- x_i = data to i

A simple regression formula, in which y is average temperature and x denotes year.

$$y = a + bx$$

$$a = \frac{(\sum y)(\sum x^2) - (\sum x)(\sum xy)}{n \sum x^2 - (\sum x)^2}$$

$$b = \frac{n \sum xy - (\sum x)(\sum y)}{n \sum x^2 - (\sum x)^2}$$

a is initial constant and b is regression coefficient.

To identify the change of $T_{\text{min-max}}$ range it is conducted by dividing data into 3 (three) periods of period I (1980-1989), period II (1990-1999) and period III (2000-2007). The position of average distribution of each period to the other periods will be used to identify the changing trend of $T_{\text{min-max}}$ range. Identification in AWS station with extreme value is to identify the effects of latitude position, distance to coast line, elevation and slope. The distribution of AWS stations used in this research is presented below.



Figure1. Map of AWS distribution in Indonesia [BMKG, 2007]

Theory Appreciation

“*Climates are not indefinitely stable*”. This statement on climate by experts can be simply elucidated that climate conditions at local, regional or global scales are basic to change. The temporary climate change patterns can be classified based on short cycle (50 years), medium cycle (200,000 years) and long cycle in million years [Haggett, 2001].

The phenomenon of climate change in short cycle is shown with the changing surface temperature of earth according to temperature data recording in UK from 1680 to 1970 (Fig. 1).

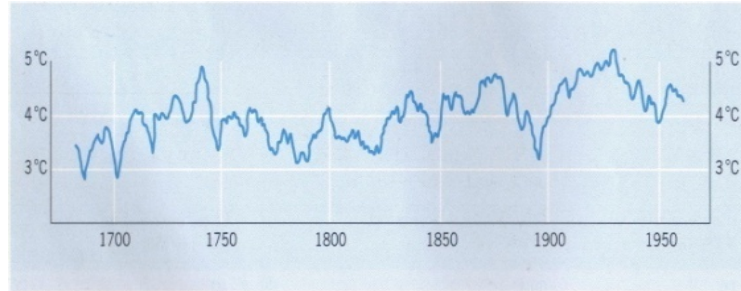


Figure 2. Annual mean temperature from 1680-1970 in central regions of London [Haggett, 2001].

Fig. 2 shows regularity in temperature change cycle pattern every 50 years. The lowest temperature was recorded in around year 1700 and year 1900. As to the highest temperature, it was recorded around year 1730 and 1930.

Climate cycle change patterns every 200,000 years as illustrated in Figure 3 show Allerod, Boreal and Subboreal as sinklin and Dryas, Atlantic and Sub-Atlantic as anticline. Cycle of 2,000,000 years is indicated by primary interglacial cycle (ice age), i.e. Gunz, Mindel, Riss and Würm, where between these ice ages climate with the collets and hottest temperatures were formed.

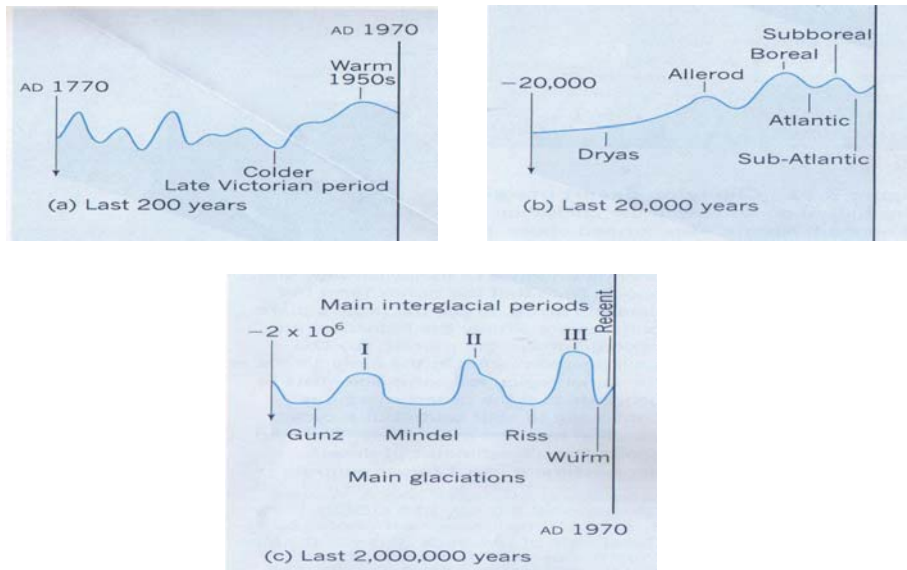


Fig.3. Changing in climate cycle [Haggett, 2001]

Further perusal to Fig. 3 will raise question. Does the on-going warming temperature on earth constitute the beginning of the fifth interglacial period? Equator regions receive averagely more intensified sun radiation than regions situated in higher latitude, i.e. some 900 Gm.cal.per cm² [Trewarta, 1954]. Accordingly, these equatorial areas will have longer sun exposure time, i.e. around 12 hours per day and more warm days in a year. In the global views, heating through 'radiative forcing' raises the temperature of the atmosphere until radiation to space increases sufficiently to bring the planet back into thermal equilibrium. According to Camilleri (2009, p. 258), the Earth's average surface temperature had increased by about 0.76 +/- 0.19 degree C and some 70% of that increase had occurred since 1950 and was attributable to human intervention.

Solar radiation falling in the surface of earth consists of short wave radiation, which part of it will be reflected back to atmosphere by earth in the form of long wave radiation. This long wave radiation produces sensible heat and can be measured as temperature parameter in °C scale Linacre in [Harmantyo, 2009] using thermometer. The energy of sensible heat is not classified as chemical energy of photosynthesis process in plants or radiation energy or evaporation energy.

In troposphere (0 – 10,000 m above sea level), the higher place from earth surface, the lower temperature. At air pressure 1,000 mb and temperature 20 °C, the temperature will decrease by 4.4 °C for every 1,000 m higher, meanwhile at air pressure 600 mb and temperature 20 °C the surface temperature will drop by 3.6 °C for every 1,000 m higher [Bruce, 1966]. According to [Sandy, 1987] surface temperature in Indonesia will decrease by 0.6 °C for every 100 m higher.

According to [Strahler, 2003], temperature change is subject to insulation, elevation, earth surface type, coast and land location, slope and greenhouse effect in atmosphere, aerosol of volcanoes, changing land use and aerosol of troposphere.

At micro scale, the changing temperature will affect metabolism reaction of organism body. Metabolism increase to temperature is measured with temperature coefficient value (Q₁₀) to identify the effect of changing temperature to organism development and growth [Mackenzie, 2001].

Box A. Temperature and rate of enzyme reaction. In ectotherms the metabolic rate is relatively slow at low temperature and more rapid as the environment become warmer. Endotherms buffer their internal organs from fluctuations in the environmental temperature, and hence do not exhibit such effects. The increase in metabolic rate with temperature can be described by temperature coefficient (Q₁₀) which is given by :

$$Q_{10} = \frac{\text{Metabolic rate at body temperature } T \text{ degree C}}{\text{Metabolic rate at body temperature } (T-10) \text{ degree C}}$$

The value of the coefficient indicates the increase in reaction rate caused by a 10 degree C rise in temperature, and is commonly about 2.0, although Q_{10} is not constant across all temperatures, showing deviations towards the upper and lower thermal limits of an organism.

Within the nonlethal temperature range for an ectotherm, the most important effect of temperature is likely to be its effect on the rate of development and growth of the organism [Mackenzie, 2001. p. 47].

RESULTS AND DISCUSSION

Indonesia is situated in equator region. As such the entire territories of Indonesia receive sun radiation for 12 hours per day with maximum temperature at 12.00 am – 14.00 pm and minimum temperature at 03.00 am – 05.00 am. For the daily temperature fluctuation pattern, see Fig. 4.

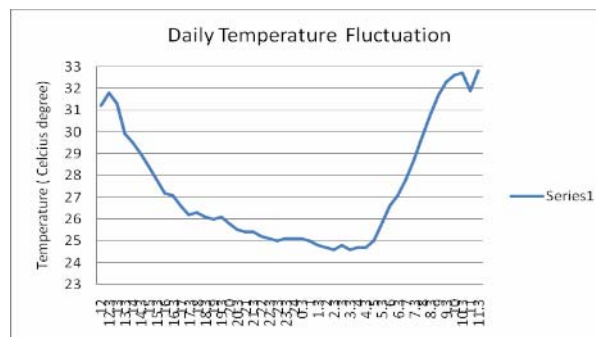


Figure.4. Daily temperature on 6 – 7 May 2010 at UI Depok Station.

Fig. 4 shows that on day-to-day basis, temperature may change dynamically. Its change caused by wind speed, humidity and clouds.

For variation of data on average temperature, see the following table based on data analysis in 2 (two) sample stations, i.e. Tabing station of West Sumatra and Tebat station of South Sumatra. Preference to these two stations is attributed to their different locations in terms of latitude, distance to coastline and slope direction. Most importantly, they have relatively complete data.

Table 1. Annual mean temperature minima and temperature maxima from 1973-2008 in Tabing Station [BMKG, 2009].

Year	T max	T min
1973	30.9	23
1974	30.1	22.8
1975	30.3	22.5
1976	30.2	22.1
1977	30.9	22.7
1978	30.4	22.5
1979	31.4	21.9
1980	31.4	22
1981	31.5	21.4
1982	30.5	22.2
1983	30.7	23
1984	30.9	21.7
1985	30.7	21.6
1986	31	21.2
1987	31.3	21.5
1988	31.9	22.2
1989	31	22
1990	31.3	22.1
1991	31.4	22.2
1992	31.5	21.5
1993	31.5	22.1
1994	31.2	21.7
1995	31.3	22.5
1996	31.6	21.8
1997	31.8	22.1
1998	32.1	22.8
1999	31.8	21.8
2000	32	21.8
2001	31.7	21.8
2002	32.2	21.7
2003	31.7	22.6
2004	31.8	21.9
2005	31	22
2006	31	22
2007	31	23
2008	31	22

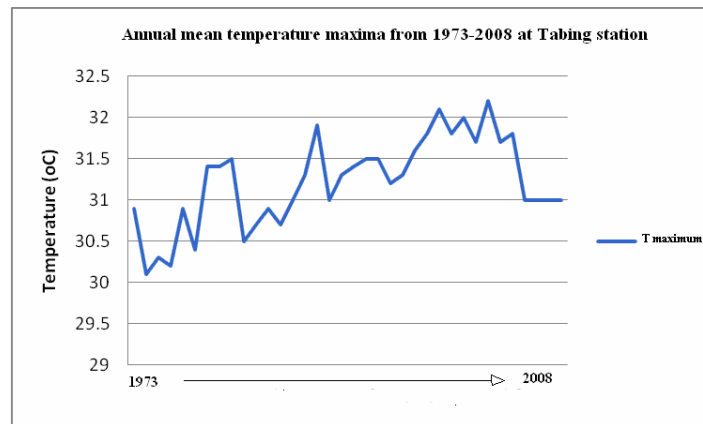


Figure 5. Annual mean temperature maxima from 1973-2008 in Tabing station.

Irregularities in temporary pattern of average maximum temperature change in Fig. 5 indicate various factors affecting temperature in Tabing Station.

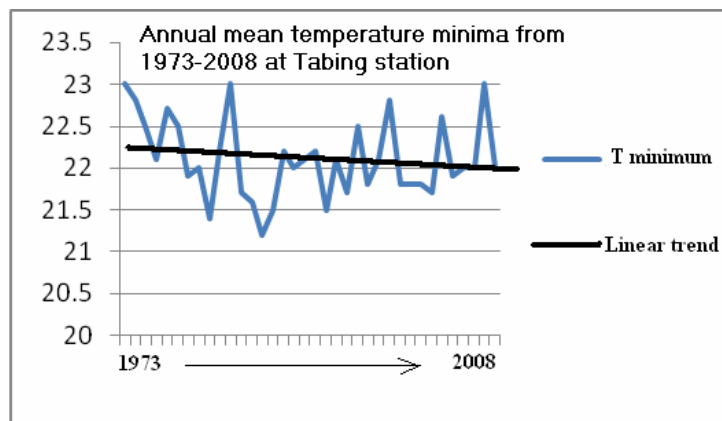


Figure 6. Annual mean temperature minima from 1973-2008 in Tabing Station

The changing of annual mean temperature minima in Fig. 6 is different from that in Fig. 5. The annual mean temperature maxima tends to rise, meanwhile annual mean temperature minima shows downward trend. It means that the difference of annual mean temperature maxima and minima ($T_{\min-\max}$) at Tabing station tends to widen.

Table 2. Annual mean temperature maxima and temperature minima from 1971-2002 at Tebat Station [BMKG, 2009].

Year	T max (C)	T min (C)	Year	T max (C)	T min (C)
1971	29,9	23,3	1987	31,7	24,1
1972	30,4	23,5	1988	31,4	23,7
1973	29,8	23,8	1989	30,7	24,5
1974	30,4	23,7	1990	31,3	23,9
1975	30,7	24,1	1991	31,1	24,5
1976	30,5	24,2	1992	31,9	24,1
1977	30,8	24,4	1993	31,7	24,4
1978	30,4	23,5	1994	32,1	24,7
1979	30,7	23,8	1995	31,7	24,3
1980	31,1	24,1	1996	31,4	24,5
1981	31,1	23,5	1997	31,2	24,3
1982	31,2	23,9	1998	31,4	24,1
1983	31,4	23,8	1999	31,3	24,2
1984	31,6	24,1	2000	31,4	24,3
1985	31,4	23,9	2001	31,1	24,5
1986	31,6	23,6	2002	31,4	24,7

Then, it is presented in the graphical model of fig. 7.

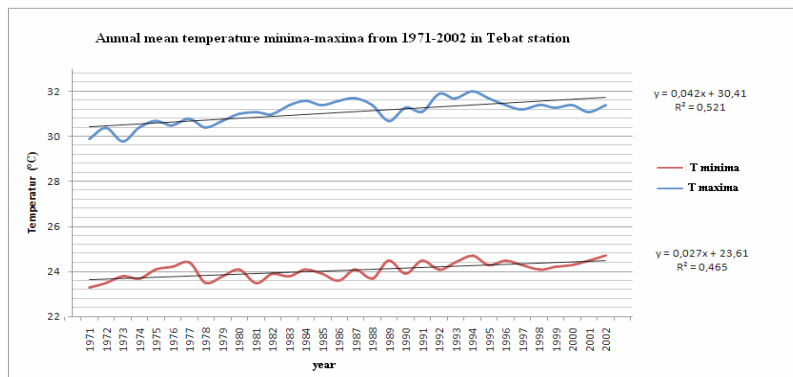


Figure 7. Annual mean temperature maxima and minima from 1971- 2002 at Tebat Station

Graph illustrating upward trend of annual mean temperature maxima and minima in Table 2, as in Fig. 7 shows that $T_{\min} - T_{\max}$ deviation in Tebat station of South Sumatra tends unchanged from 1973-2003. This is different from condition at Tabing station of West Sumatra.

Temperature $_{\min-\max}$ Deviation

At variance with the above samples of Tabing station and Lahat station, data analysis of $T_{\min-\max}$ deviation in 60 AWS stations is made by differentiating such data into 3 (three) periods, i.e. period I (1980-1990), period II (1990-2000) and period III (2000-2007).

The distribution pattern of $T_{\min-\max}$ deviation in 3 (three) periods is presented in Fig. 8 that follows:

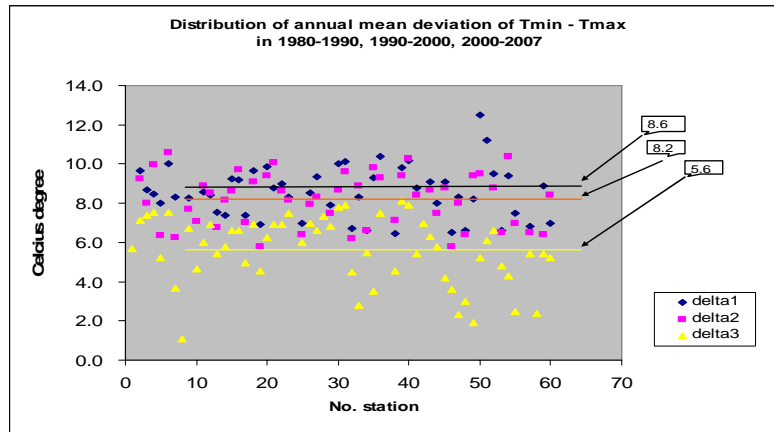


Figure 8. Distribution of mean deviation of $T_{\min-\max}$ at period I (1980-1990), Period II (1990-2000) and period III (2000-2007).

The distribution of $T_{\min-\max}$ deviation at the period I (*blue*) is shown in the upper part and then followed by respectively distribution of deviation at the period II (*red*) and period III (*yellow*) indicating downward deviation changes.

From the position of deviation distribution during the three periods as illustrated in Fig. 8, it can be concluded that in general the deviation range of annual mean temperature maxima and minima in Indonesia tends to shorten. It implies that despite upward trends, the rise of minimum temperature is higher than that of maximum temperature increase. This is evident from the distribution patterns of annual mean deviation of temperature maxima and minima as depicted respectively in Fig. 9 and Fig.10 that follow.

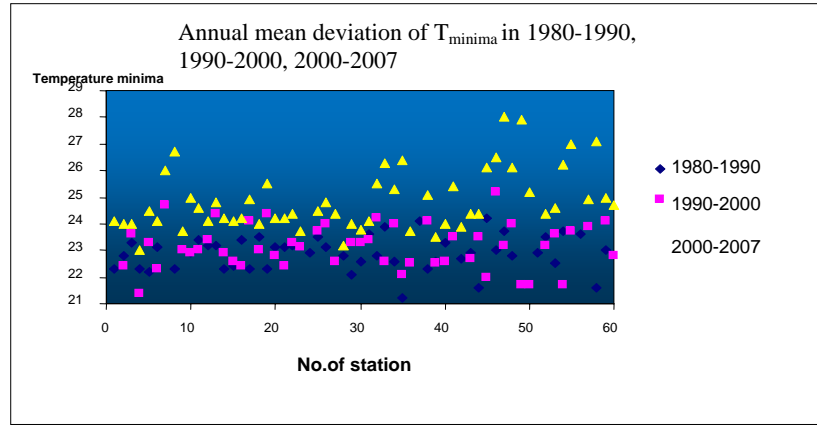


Figure 9. Distribution of annual mean deviation of temperature minima in period I, II, III.

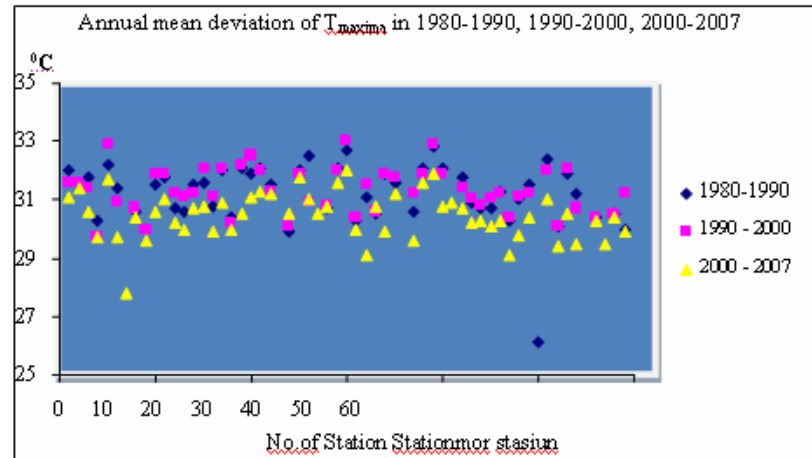


Figure 10. Distribution of annual mean deviation of temperature maxima in period I, II, III

Fig. 9 shows average maximum temperature deviation for period I distributing in the upper layer because of their larger values. Then, respectively followed by deviation values for period II and period III distributed in lower layers due to their smaller values. In contrast, average maximum temperature deviation is illustrated in Fig. 10.

Based on the above distribution pattern of $T_{\min-\max}$ deviation generally speaking temperature amplitude in Indonesia from 1980-2007 is as presented in graphical model of Fig. 11.

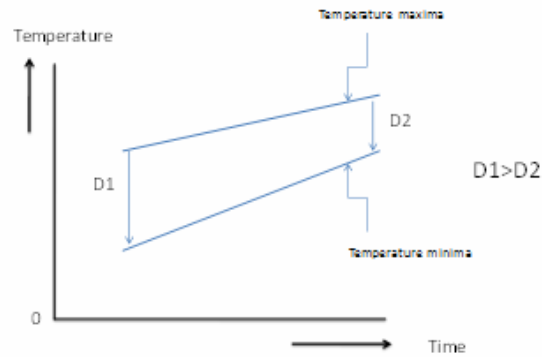


Figure 11. Graphical model of annual mean temperature minima-maxima from 1980-2007 in Indonesia

Graphically, T_{\min} and T_{\max} range and $T_{\min-\max}$ (D) difference is indicated in Fig. 11 with the value of $D1 > D2$.

According to data analysis, it is obvious that to eastward the rise of average minimum temperature tends to be higher. Accordingly, the difference of $T_{\min-\max}$ deviation gets greater toward eastward (see fig.12).

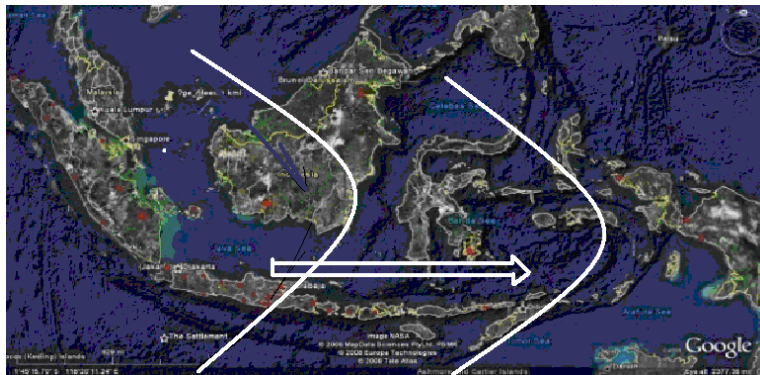


Figure 12. General pattern of the difference of T min-max deviation from the west to the eastern part.

From ecology wise, this changing temperature amplitude will affect the metabolism process of living organism due to the changing tolerable limits to external temperature change. The troubled metabolism process will generate effect to productivity.

Any change in productivity, especially in agriculture plants and livestock will have influence over food resilience capacity at farmer level, and in turn at national scale.

CONCLUSION

The calculation produces increase of annual mean temperature in Indonesia is around $0.01 - 0.2^{\circ}\text{C}$ from 1980-2007. It is still at the lowest level since at global scale temperature is predicted to rise at $0.76 \pm 0.19^{\circ}\text{C}$ range after 1950.

Temperature amplitude range between T_{\min} and T_{\max} from 1980-2007 is diminishing because of minimum temperature change rate outpacing the rate of maximum temperature change. Owing to various climate control factors, this study fails to reveal what atmosphere dynamics causing the lowering of such amplitude range. This research fails to show what factors contributing to the changing temperature amplitude.

More in-depth research of these factors at ecological scale will be necessary as crucial part in determining adaptation programs to this on-going climate change phenomenon.

In light of foregoing, in-depth research on temperature change including comprehensive observation and data analysis should be carried out in more continual and accurate basis. It is therefore deemed necessary to add climate measuring tools in automatic systems (AWS) throughout Indonesia.

ACKNOWLEDGEMENT

The author would like to acknowledge to Prof. Kees Stigter, Ph.D.- <Professor in Agrometeorology, Wageningen University Netherland, TTMI/- African Network & Asian Picnic Model Project, Founding President INSAM and Visiting Professor in Asia and Africa – Agromet Vision > for his constructive reviews of this manuscript especially on information that's this results is not differ with the same research results in China region.

REFERENCES

- BMKG, (2004). *Pemutahiran Daerah Prakiraan Musim di Indonesia*. Badan Meteorologi dan Geofisika, Jakarta
- Bary, R.G. and Chorley, R.G. (1998). *Atmosphere, Weather & Climate*. Tenth Edition Routledge, London.
- Bruce. J.P & R.H.Clark, (1966). *Introduction to Hydrometeorology*. Pergamon Press. New York.
- Camilleri, JA, Jim Falk, (2009). *Worlds in Transition. Evolving Governance Across a Stressed Planet*. Edward Elgar Publ. Ltd. UK.

- Carlson. T.N. (1981). *Tropical Meteorology*. Pennsylvania State University, USA.
- Gunawan. B. Kenaikan Muka Air Laut Dan Adaptasi Masyarakat. Prosiding Seminar Indonesia – Jepang tentang Dampak Pembangunan Kota dan Lingkungan Global. Bandung. 2001.
- Hagget, P. (2001). *Geography, A Global Synthesis*. Prentice Hall, Pearson Education Limited, Edinburgh Gate, Harlow, Essex CM20 2JE England.
- Harmantyo, D. (2008). *Skenario Alih Teknologi Dalam menghadapi Dampak perubahan Iklim*. Prosiding Seminar Nasional tentang Peranan Geografi Dalam Menghadapi Dampak Perubahan Iklim. Padang Sumatra Barat.
- Harmantyo, D. (2009). *A Preliminary Investigation on Climate Change in Indonesia*. International Workshop on Vulnerability to Climate Change: Adaptation, Conservation And Livelihoods in Indonesia. Conservation Internasional Indonesia–UI. Depok.
- Harmantyo, D. (2009). *Climate Role in Changing the Face of the Earths*. International Workshop on Climate Information Services in Supporting Mitigation and Adaptation to Climate Change. BMKG. Jakarta.
- Harmantyo, D. (2009). *Dinamika Iklim Indonesia. Buku Teks*. Universitas Indonesia. Depok (unpublished).
- Haryoko, U, dkk. (2008). *Analisis Trend Suhu Udara dan Curah Hujan untuk Deteksi Perubahan Iklim*. Seminar Hari Meteorologi Dunia 2008. Jakarta
- IPCC (Intergovernmental Panel on Climate Change), Climate Change (2007). *The Physical Science Basis*. Summary for Policy Makers, Contribution of Working Group I to the Fourth Assessment Report of the Intergovernmental Panel on Climate Change. Paris, February 2007. <http://www.ipcc.ch/>, 2007.
- Houghton, J. T., Meira Filho, L. G., Cailander, B. A., Harris, N., Kattenberg, A. & Maskell, K. IPCC (Intergovernmental Panel on Climate Change), 1996. Climate Change (1995): The Science of Climate Change. Contribution of WGI to the Second Assessment Report of the Intergovernmental Panel on Climate Change. Cambridge University Press, Cambridge, U.K., 572 pp.
- Linacre, E. and Bart Geerts. (1997). *Climates & Weather Explained*. Routledge. London.
- Olmos. S. (2001). *Vulnerability and Adaptation to Climate Change. Concepts, Issues and Assessment Methods*. www.cckn.net. 2001.
- Radziejewski, M., Bardossy, A., Kundzewicz, Z. W., (2000). *Phase randomization for change detection in hydrological data*. In: Detecting trend and other changes in hydrological data (Robson, A. & Kundzewicz, Z. W., Eds.), chap. 12, World Climate Programme - Applications and Services, World Meteorological Organization, Geneva.

- Sandy, I.M. (1987). *Iklim Regional Indonesia. Jurusan Geografi. FMIPA, Universitas Indonesia. Jakarta.*
- Sandy. I.M. (1996). *Geografi Regional Republik Indonesia. Jurusan Geografi. FMIPA, Universitas Indonesia. Jakarta.*
- Southwick. C.H. (1976). *Ecology and the Quality of our Environment.. D.Van Nostrand Co. London.*
- Strahler, A. (2003). *Physical Geography. John Wiley & Son. NY.*
- Susandi, A. (2004). *The impact of international greenhouse gas emissions reduction on Indonesia. Report on Earth System Science, Max Planck Institute for Meteorology, Jerman.*
- Trewartha. Glenn. T. (1954). *An Introduction to Climate. McGraw Hill Book Co. Inc. NY.*
- WMO, (1988). *Analyzing long time series of hydrological data with respect to climate variability. Project description, WCAP-3, WMOTFD-No. 224, Geneva, Switzerland.*