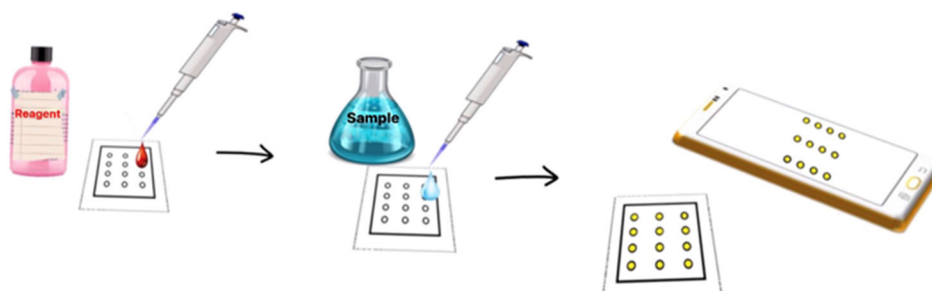
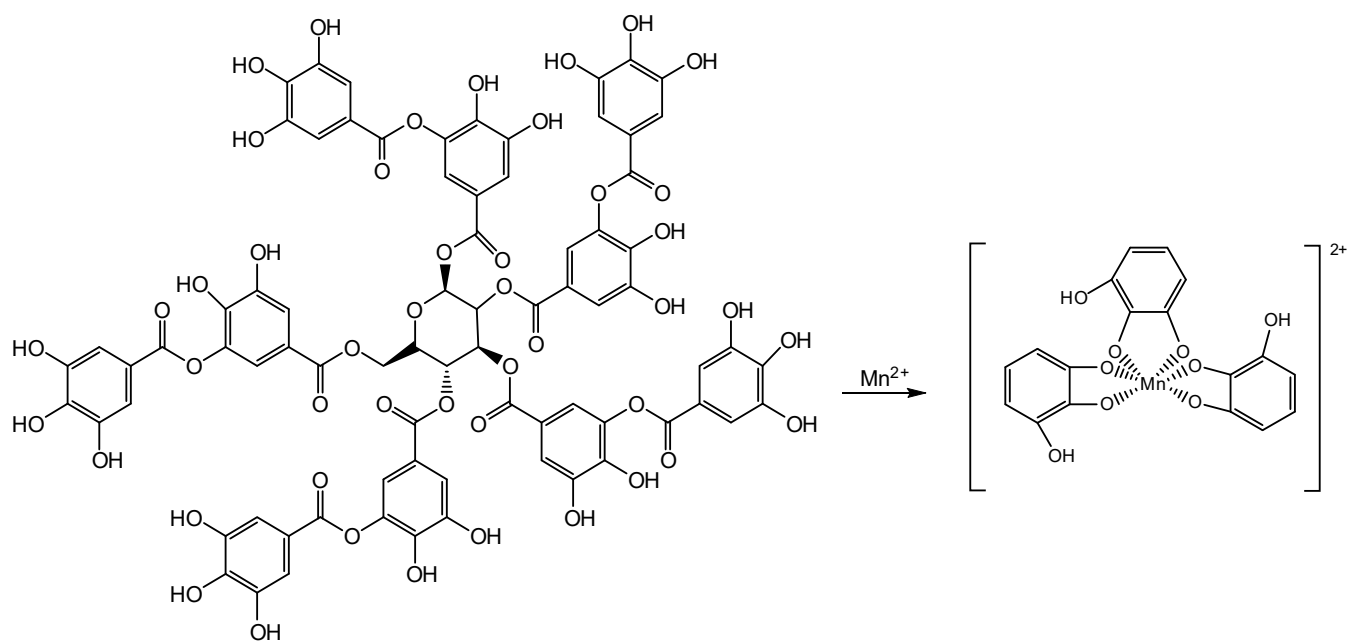


### Supplementary Data

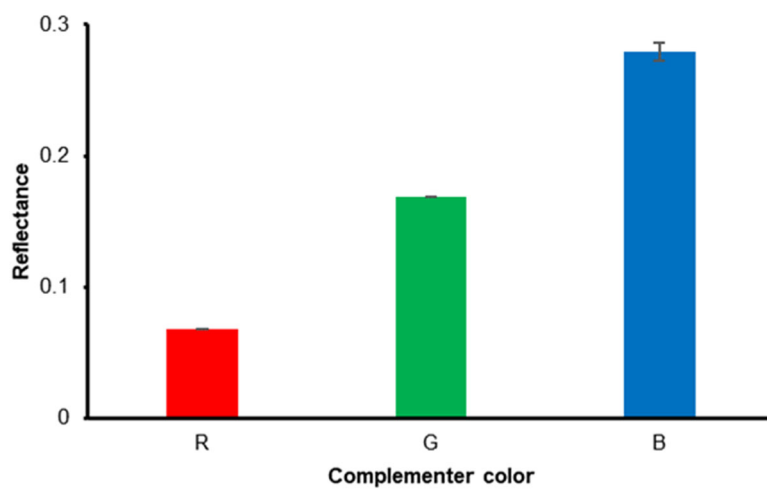
This supplementary data is a part of a paper entitled “Simple Microfluidic Paper-Based Analytical Device ( $\mu$ -PAD) Coupled with Smartphone for Mn(II) Detection Using Tannin as a Green Reagent”.



**Fig S1.** Schematic representation of the optimization procedure of  $\mu$ -PAD and the determination of Mn(II) using  $\mu$ -PAD



**Fig S2.** Schematic representation of reaction between tannin reagent and Mn(II)



**Fig S3.** The reflectance after the addition of Mn(II) standard in the  $\mu$ -PADs calculated using R, G and B intensity