

### Supplementary Data

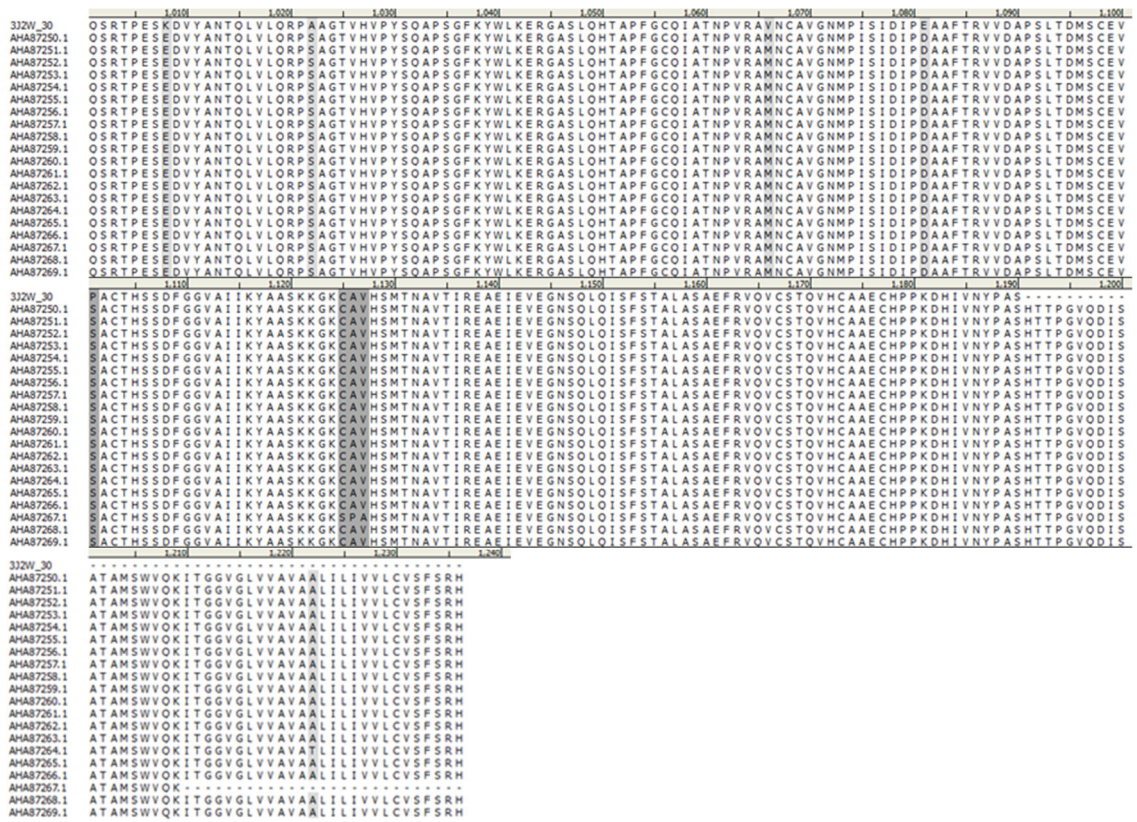
This supplementary data is a part of a paper entitled “Protein Modelling Insight to the Poor Sensitivity of Chikungunya Diagnostics on Indonesia’s Chikungunya Virus”.



**Fig S1.** Sequence alignment of E1-E2 Ind-CHIKV. The mutation points are highlighted in dark color. The CHK-152 antibody binding site are presented in red line and the B-cell epitopes are highlighted in black and blue color, respectively



Fig S1. Sequence alignment of E1-E2 Ind-CHIKV. The mutation points are highlighted in dark color. The CHK-152 antibody binding site are presented in red line and the B-cell epitopes are highlighted in black and blue color, respectively (Continued)



**Fig S1.** Sequence alignment of E1-E2 Ind-CHIKV. The mutation points are highlighted in dark color. The CHK-152 antibody binding site are presented in red line and the B-cell epitopes are highlighted in black and blue color, respectively (Continued)