

Supplementary Data

This supplementary data is a part of a paper entitled "Synthesis, Characterization, and Antibacterial Activity of Lanthanide Metal Complexes with Schiff Base Ligand Produced from Reaction of 4,4-Methylene Diantipyrine with Ethylenediamine".

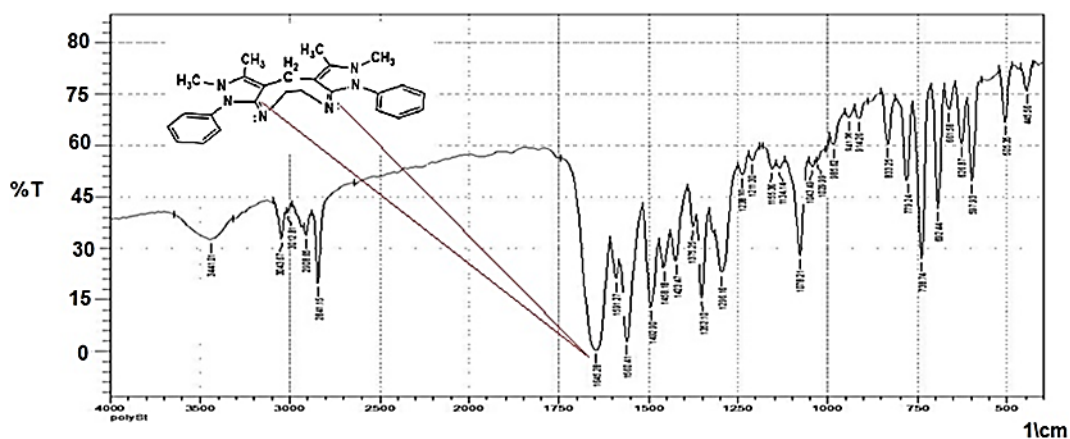


Fig S1. FT-IR spectra of Schiff base ligand

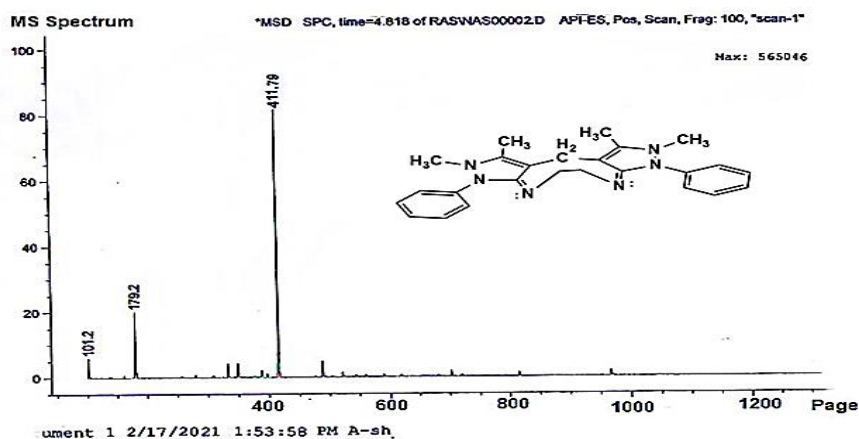


Fig S2. LC-MS spectra of Schiff base ligand

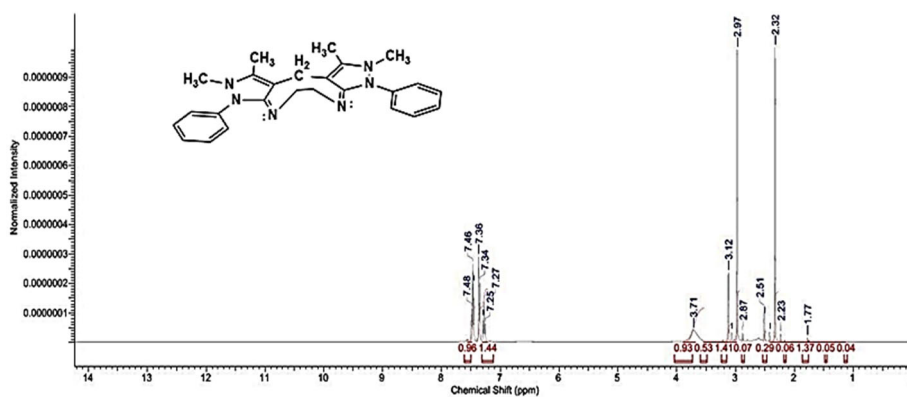


Fig S3. ¹H-NMR Spectrophotometer of Schiff base ligand

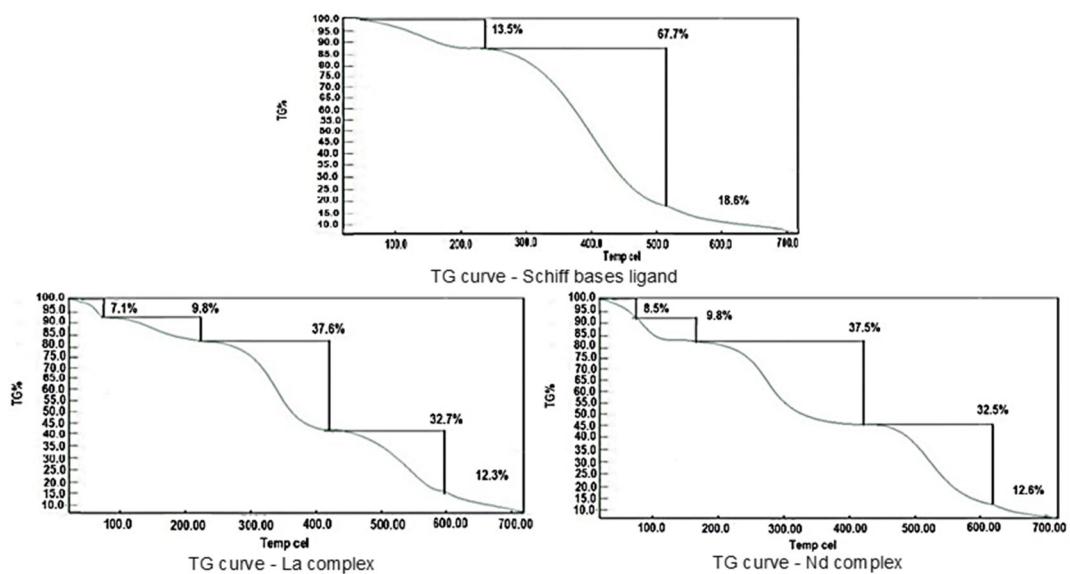


Fig S7. TG curve - Schiff bases ligand and lanthanide complexes