

Supplementary Data

This supplementary data is a part of paper entitled “Design of Catechin-based Carbon Nanodots as Facile Staining Agents of Tumor Cells”.

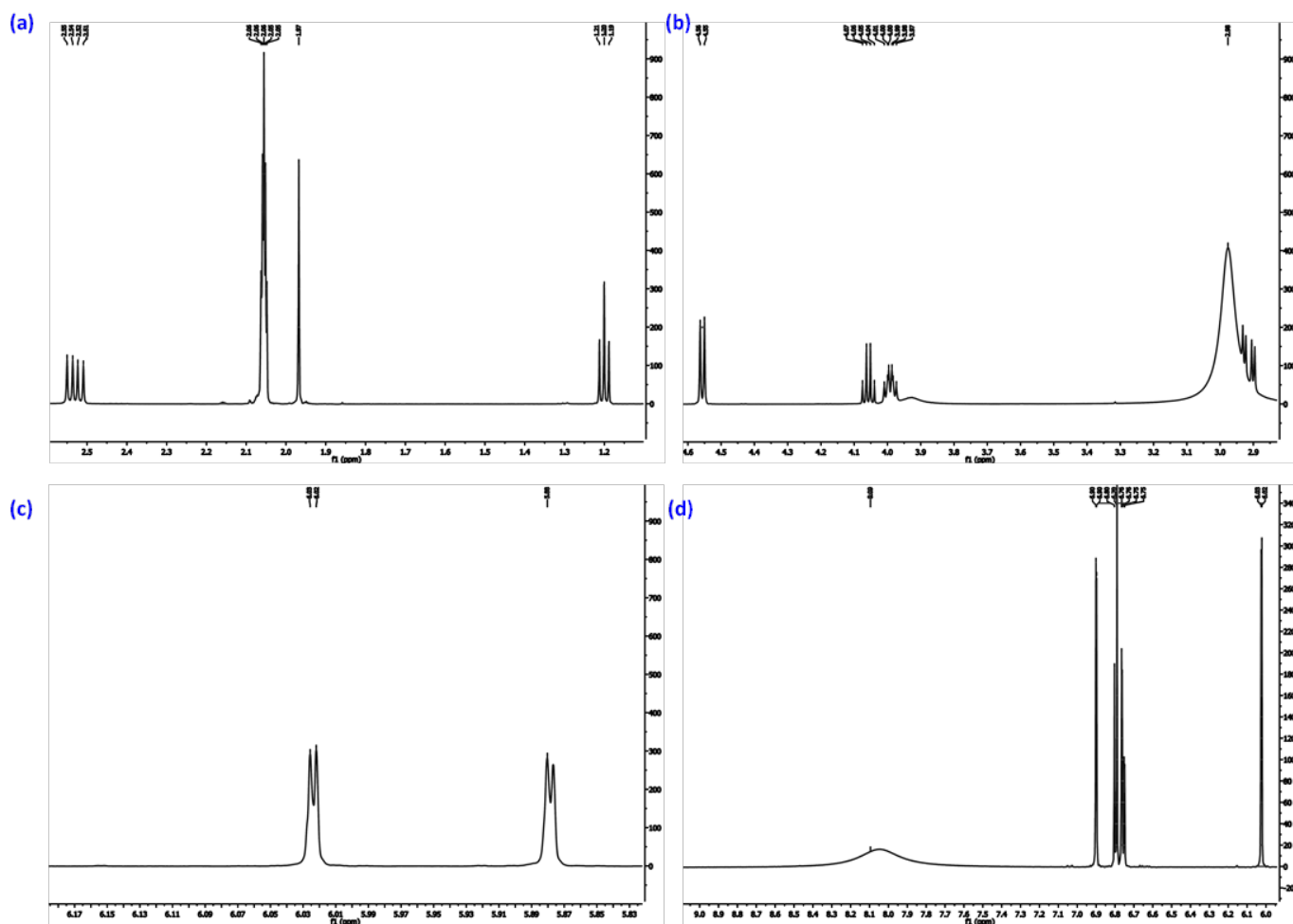


Fig S1. ¹H-NMR spectra of Catechin with δ from 1.1–2.6 ppm (a); 2.9–4.6 ppm (b); 5.81–6.19 ppm (c); and 6.0–9.1 ppm (d)

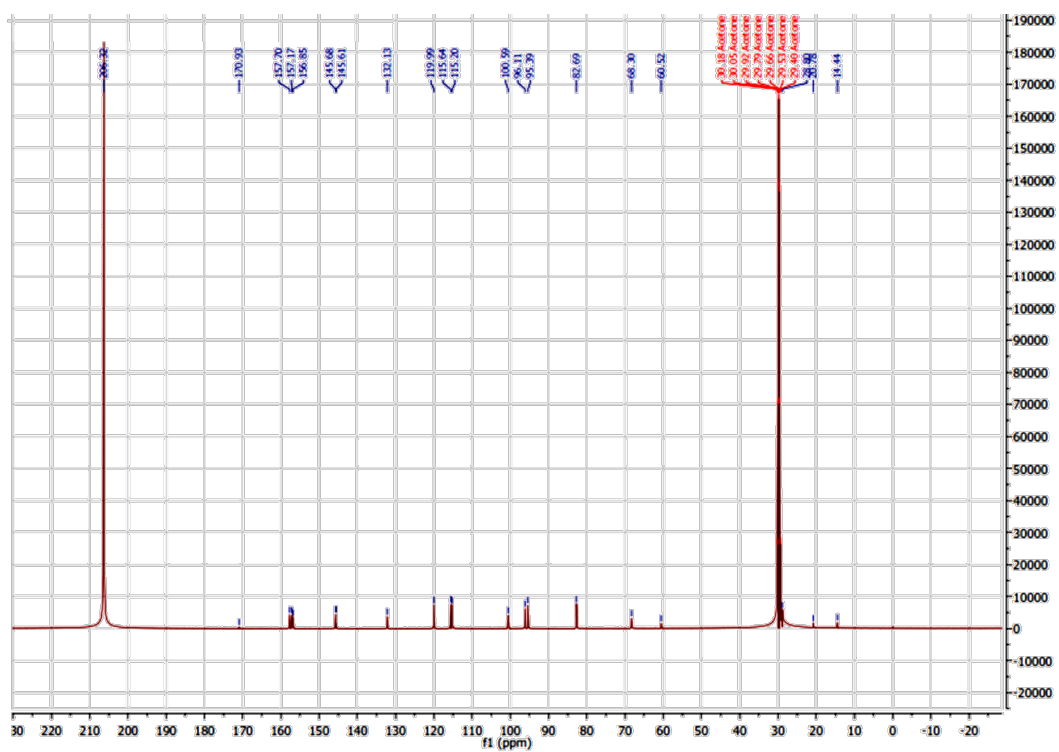


Fig S2. ^{13}C -NMR of Catechin